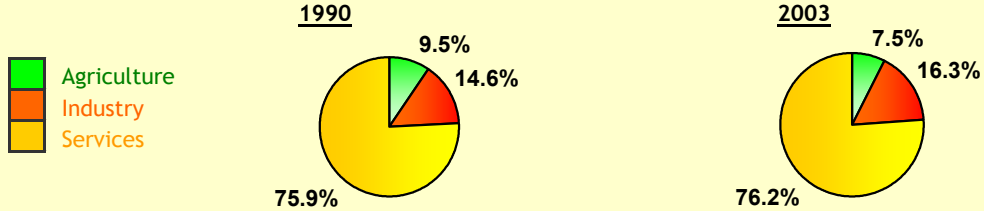


## PANAMA

Population	2004	3.0 Mio inhabitants				
Area		76 (1000qkm)				
Gross domestic product	2004	11 Bn euros	Exports-to-GDP ratio:	18.1	% in 2004	
GDP per capita	2004	3 637 Euros				
(IMF, World Economic Outlook)			2001	2002	2003	2004
Real GDP (% growth)			0.6	2.2	4.3	6.0
Inflation rate (%)			0.3	1.0	1.0	0.5
Current account balance (% of GDP)			-1.5	-0.5	-3.2	-1.7

### GDP BY SECTOR



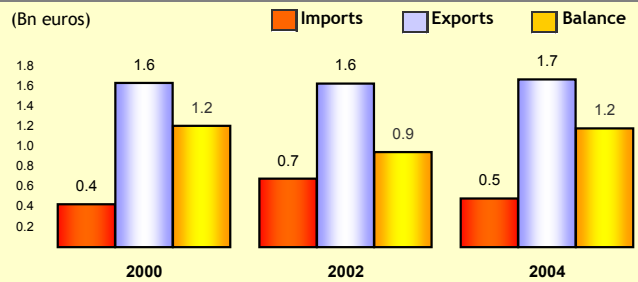
Source: World Bank (WDI)

### PANAMA MERCHANDISE TRADE WITH THE WORLD



Source: IMF (Direction of Trade Statistics)

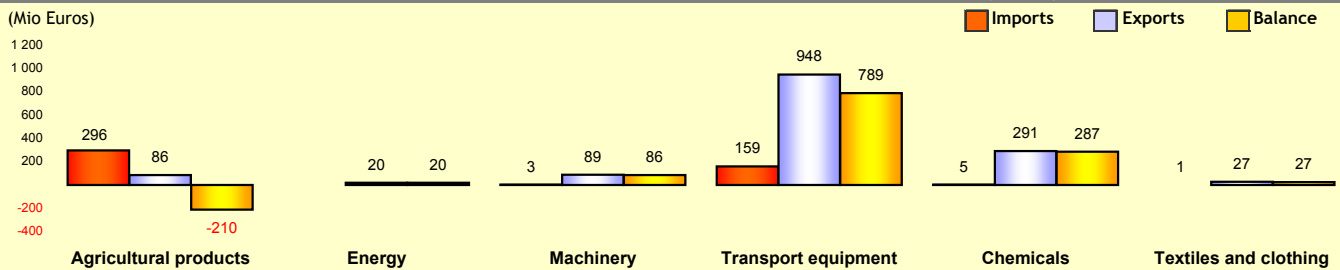
### EU25 MERCHANDISE TRADE WITH PANAMA



\* excl intra EU Trade Source: Eurostat, statistical regime 4

% OF THE WORLD *	2000			2002			2004		
	Imports	Exports	Balance	Imports	Exports	Balance	Imports	Exports	Balance
Imports	0.07	0.02	-0.05	0.06	0.02	-0.04	0.28	0.04	-0.24
Exports	0.02	0.02	0.00	0.02	0.02	0.00	0.04	0.19	0.15

### EU25 MERCHANDISE TRADE WITH PANAMA BY PRODUCT (2004)



Source: Eurostat, statistical regime 4



**PANAMA**

## EU BILATERAL TRADE AND TRADE WITH THE WORLD

(EU: 25 members, recalculated series since 2000)



17-juin-05

DG TRADE

### TOTAL MERCHANDISE TRADE, 2000-2004

1. Evolution of the EU's Trade Balance with Panama
2. Evolution of the Panama's Trade Balance

### GEOGRAPHIC BREAKDOWN OF TRADE, 2004

3. EU Trade with Main Partners
4. Panama's Trade Balance with Main Partners

### SECTORAL BREAKDOWN OF TRADE

#### Sitc Rev3, Sections and Product Grouping

5. European Union, Trade with the World and Panama, by Sitc Section
6. European Union Imports, by Product Grouping
7. European Union Exports, by Product Grouping
8. Rank of Panama in European Union Trade

#### Harmonized System, Sections

9. EU Trade with the World and EU Trade with Panama (2004)

## EVOLUTION OF THE EU'S TRADE BALANCE WITH PANAMA

(Mio euro)

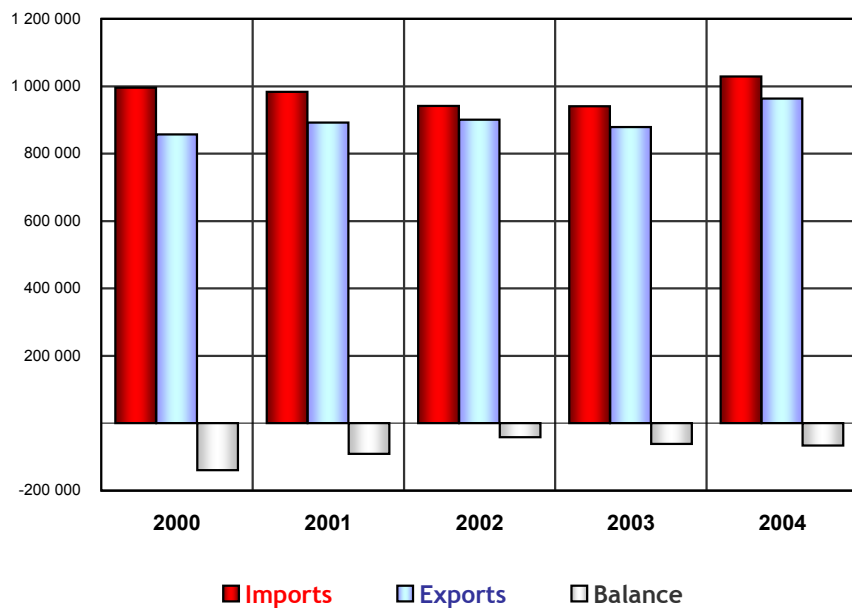
European Union, Trade with the World

Year	Imports	Yearly % change	Exports	Yearly % change	Balance	Imports + Exports
2000	995 649		856 728		-138 921	1 852 377
2001	983 439	-1.2	892 716	4.2	-90 724	1 876 155
2002	941 570	-4.3	900 389	0.9	-41 181	1 841 959
2003	940 405	-0.1	878 646	-2.4	-61 759	1 819 050
2004	1 029 326	9.5	963 709	9.7	-65 617	1 993 035
3m 2004	239 750		221 302		-18 448	461 051
3m 2005	259 082	8.1	232 374	5.0	-26 708	491 456
Average annual growth		0.8		3.0		1.8

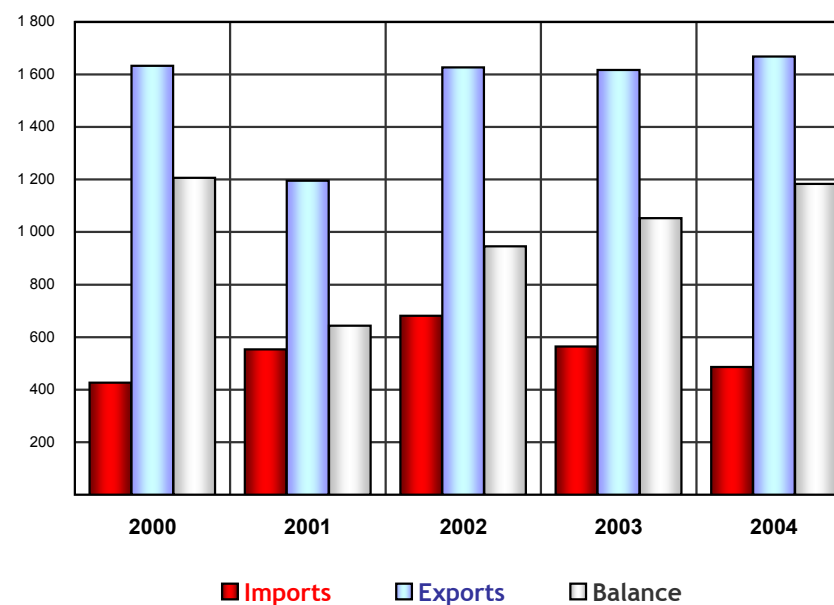
European Union, Trade with ... Panama

Year	Imports	Yearly % change	Share of total EU imports	Exports	Yearly % change	Share of total EU exports	Balance	Imports + Exports
2000	426		0.04	1 633		0.19	1 207	2 059
2001	553	29.8	0.06	1 196	-26.8	0.13	643	1 749
2002	681	23.2	0.07	1 627	36.0	0.18	945	2 308
2003	564	-17.2	0.06	1 617	-0.6	0.18	1 053	2 182
2004	486	-13.9	0.05	1 669	3.2	0.17	1 183	2 154
3m 2004	101		0.04	175		0.08	75	276
3m 2005	126	25.0	0.05	236	34.8	0.10	110	363
Average annual growth		3.3			0.5			1.1

European Union, Trade with the World



European Union, Trade with ... Panama



World excluding Intra-EU trade and European Union: 25 members.

## EVOLUTION OF THE PANAMA'S TRADE BALANCE

(Mio euro)

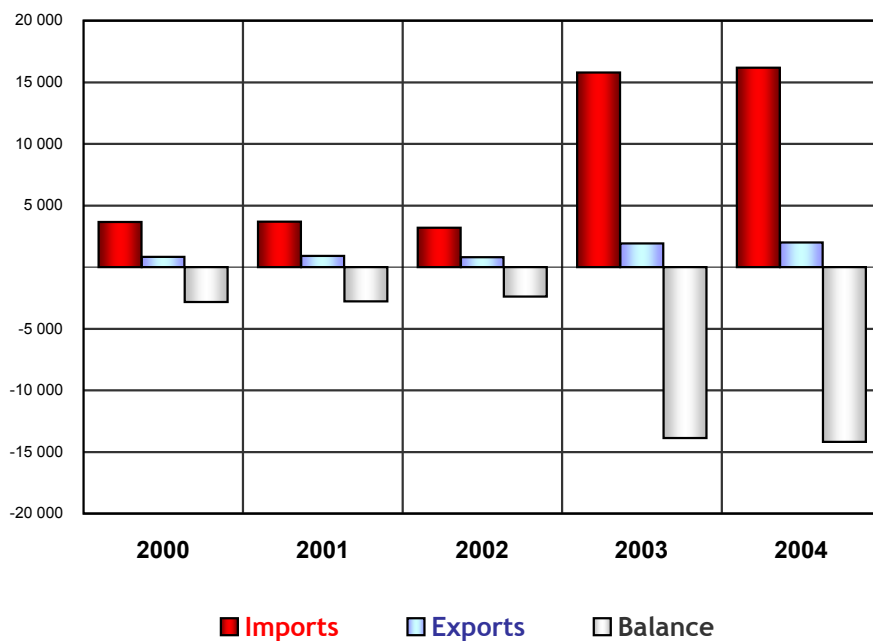
### Panama, Trade with the World

Year	Imports	Yearly % change	Exports	Yearly % change	Balance	Imports + Exports
2000	3 663		829		-2 835	4 492
2001	3 701	1.0	911	9.9	-2 791	4 612
2002	3 190	-13.8	794	-12.8	-2 396	3 984
2003	15 797	395.2	1 933	143.3	-13 865	17 730
2004	16 175	2.4	2 002	3.6	-14 172	18 177
Average annual growth		45.0		24.7		41.8

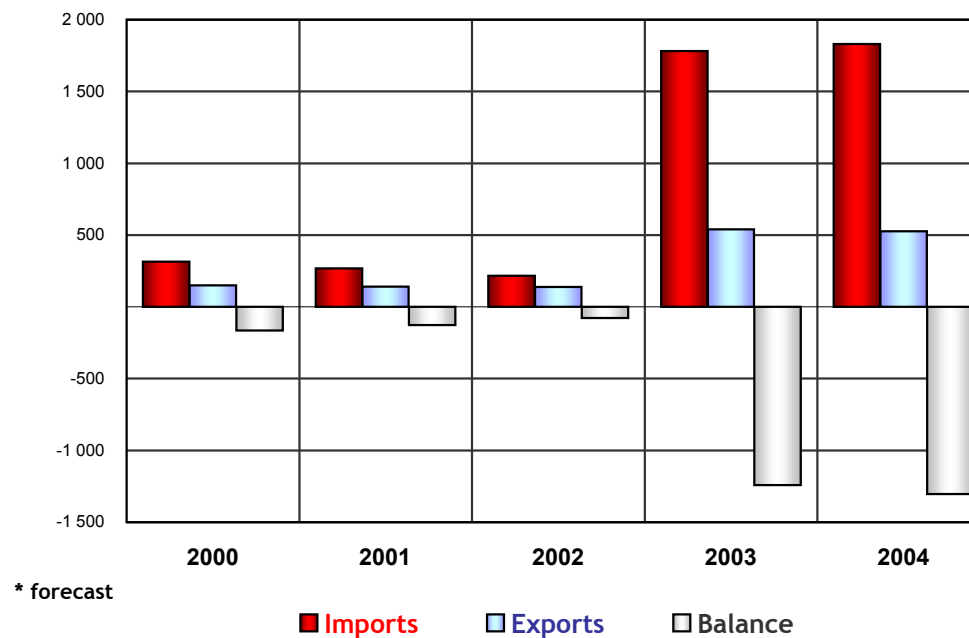
### Panama, Trade with the European Union

Year	Imports	Yearly % change	EU Share of total imports	Exports	Yearly % change	EU Share of total exports	Balance	Imports + Exports
2000	315		8.59	150		18.04	-165	464
2001	268	-14.8	7.24	142	-5.2	15.57	-126	410
2002	217	-18.9	6.81	139	-2.3	17.44	-79	356
2003	1 781	720.6	11.28	540	289.9	27.95	-1 241	2 322
2004	1 830	2.8	11.32	527	-2.4	26.33	-1 303	2 358
Average annual growth		55.3			37.0			50.1

### Panama, Trade with the World



### Panama, Trade with the European Union



European Union: 25 members.

**EU TRADE WITH MAIN PARTNERS**

(2004)

**The major imports partners**

**The major export partners**

**The major trade partners**

Partners	Mio euro	%
<b>World</b>	<b>1 029 326</b>	<b>100.0</b>
1 USA	157 670	15.3
2 China	126 912	12.3
3 Russia	80 476	7.8
4 Japan	73 745	7.2
5 Switzerland	61 460	6.0
6 Norway	56 038	5.4
7 Turkey	30 951	3.0
8 Korea	30 251	2.9
9 Taiwan	23 645	2.3
10 Brazil	21 131	2.1
11 Singapore	17 039	1.7
12 Canada	16 250	1.6
13 India	16 237	1.6
14 Saudi Arabia	16 115	1.6
15 Malaysia	15 784	1.5
16 South Africa	15 747	1.5
17 Algeria	15 253	1.5
18 Romania	14 071	1.4
19 Libya	13 626	1.3
20 Thailand	12 766	1.2
86 Panama	486	0.0

Partners	Mio euro	%
<b>World</b>	<b>963 709</b>	<b>100.0</b>
1 USA	234 140	24.3
2 Switzerland	75 035	7.8
3 China	48 131	5.0
4 Russia	45 712	4.7
5 Japan	43 210	4.5
6 Turkey	38 024	3.9
7 Norway	30 752	3.2
8 Canada	21 950	2.3
9 Australia	19 858	2.1
10 Hong Kong	19 164	2.0
11 United Arab Emir.	18 639	1.9
12 Romania	18 014	1.9
13 Korea	17 815	1.8
14 India	17 031	1.8
15 South Africa	16 106	1.7
16 Singapore	16 061	1.7
17 Mexico	14 654	1.5
18 Brazil	14 123	1.5
19 Taiwan	12 827	1.3
20 Israel	12 758	1.3
54 Panama	1 669	0.2

Partners	Mio euro	%
<b>World</b>	<b>1 993 035</b>	<b>100.0</b>
1 USA	391 810	19.7
2 China	175 043	8.8
3 Switzerland	136 495	6.8
4 Russia	126 188	6.3
5 Japan	116 955	5.9
6 Norway	86 791	4.4
7 Turkey	68 975	3.5
8 Korea	48 066	2.4
9 Canada	38 200	1.9
10 Taiwan	36 472	1.8
11 Brazil	35 255	1.8
12 India	33 267	1.7
13 Singapore	33 100	1.7
14 Romania	32 085	1.6
15 South Africa	31 853	1.6
16 Hong Kong	29 086	1.5
17 Saudi Arabia	28 681	1.4
18 Australia	28 557	1.4
19 Algeria	24 700	1.2
20 Malaysia	24 514	1.2
66 Panama	2 154	0.1

**EU Imports from ...**

**EU Exports to ...**

**Imports + Exports**

Partner regions	Mio euro	%
<b>World</b>	<b>1 029 326</b>	<b>100.0</b>
<b>NAFTA</b>	<b>180 732</b>	<b>17.6</b>
<b>Latin America</b>	<b>56 665</b>	<b>5.5</b>
<b>EU Candidates</b>	<b>53 566</b>	<b>5.2</b>
<b>EFTA</b>	<b>120 248</b>	<b>11.7</b>
<b>Medit.Countries*</b>	<b>44 381</b>	<b>4.3</b>
<b>ASEAN</b>	<b>69 098</b>	<b>6.7</b>

Partner regions	Mio euro	%
<b>World</b>	<b>963 709</b>	<b>100.0</b>
<b>NAFTA</b>	<b>270 743</b>	<b>28.1</b>
<b>Latin America</b>	<b>47 739</b>	<b>5.0</b>
<b>EU Candidates</b>	<b>71 923</b>	<b>7.5</b>
<b>EFTA</b>	<b>108 673</b>	<b>11.3</b>
<b>Medit.Countries*</b>	<b>53 541</b>	<b>5.6</b>
<b>ASEAN</b>	<b>42 748</b>	<b>4.4</b>

Partner regions	Mio euro	%
<b>World</b>	<b>1 993 035</b>	<b>100.0</b>
<b>NAFTA</b>	<b>451 476</b>	<b>22.7</b>
<b>Latin America</b>	<b>104 404</b>	<b>5.2</b>
<b>EU Candidates</b>	<b>125 489</b>	<b>6.3</b>
<b>EFTA</b>	<b>228 921</b>	<b>11.5</b>
<b>Medit.Countries*</b>	<b>97 922</b>	<b>4.9</b>
<b>ASEAN</b>	<b>111 846</b>	<b>5.6</b>

NAFTA: Canada, Mexico, USA.

Latin America: 20 countries.

EU Candidates: Bulgaria, Croatie, Romania, Turkey

EFTA: Iceland, Norway, Switzerland.

Mediterranean countries \*excluding Turkey: Algeria, Cisjordanie Gaza, Egypt, Israel, Jordan, Lebanon, Morocco, Syria, Tunisia.

ASEAN: Brunei, Cambodia, Indonesia, Laos, Malaysia, Myanmar, Philippines, Singapore, Thailand, Vietnam.

World excluding Intra-EU trade and European Union: 25 members.

PANAMA'S TRADE BALANCE WITH MAIN PARTNERS

(2004)

The major import partners

Partners	Mio euro	%
<b>World</b>	<b>16 175</b>	<b>100.0</b>
1 Japan	5 358	<b>33.1</b>
2 EU	<b>1 830</b>	<b>11.3</b>
3 China	1 731	<b>10.7</b>
4 USA	1 600	<b>9.9</b>
5 Korea	1 177	<b>7.3</b>
6 Singapore	1 149	<b>7.1</b>
7 Hong Kong	515	<b>3.2</b>
8 Mexico	301	<b>1.9</b>
9 Brazil	172	<b>1.1</b>
10 Venezuela	163	<b>1.0</b>
11 Colombia	160	<b>1.0</b>
12 Switzerland	159	<b>1.0</b>
13 Chile	148	<b>0.9</b>
14 Peru	141	<b>0.9</b>
15 Norway	137	<b>0.8</b>
16 Costa Rica	114	<b>0.7</b>
17 Ecuador	103	<b>0.6</b>
18 Russia	74	<b>0.5</b>
19 Guatemala	65	<b>0.4</b>
20 Malaysia	64	<b>0.4</b>

The major export partners

Partners	Mio euro	%
<b>World</b>	<b>2 002</b>	<b>100.0</b>
1 EU	<b>527</b>	<b>26.3</b>
2 USA	245	<b>12.2</b>
3 Nigeria	188	<b>9.4</b>
4 Korea	164	<b>8.2</b>
5 El Salvador	115	<b>5.8</b>
6 Peru	103	<b>5.1</b>
7 Costa Rica	102	<b>5.1</b>
8 Japan	83	<b>4.2</b>
9 Honduras	43	<b>2.1</b>
10 Mexico	38	<b>1.9</b>
11 Canada	28	<b>1.4</b>
12 Switzerland	25	<b>1.2</b>
13 Norway	23	<b>1.1</b>
14 Turkey	22	<b>1.1</b>
15 Guatemala	20	<b>1.0</b>
16 Dominican Republic	20	<b>1.0</b>
17 Colombia	20	<b>1.0</b>
18 Thailand	19	<b>1.0</b>
19 Nicaragua	17	<b>0.9</b>
20 Aruba	16	<b>0.8</b>

The major trade partners

Partners	Mio euro	%
<b>World</b>	<b>18 177</b>	<b>100.0</b>
1 Japan	5 441	<b>29.9</b>
2 EU	<b>2 358</b>	<b>13.0</b>
3 USA	1 845	<b>10.1</b>
4 China	1 741	<b>9.6</b>
5 Korea	1 341	<b>7.4</b>
6 Singapore	1 157	<b>6.4</b>
7 Hong Kong	527	<b>2.9</b>
8 Mexico	339	<b>1.9</b>
9 Peru	244	<b>1.3</b>
10 Costa Rica	216	<b>1.2</b>
11 Nigeria	188	<b>1.0</b>
12 Switzerland	184	<b>1.0</b>
13 Colombia	180	<b>1.0</b>
14 Brazil	178	<b>1.0</b>
15 Venezuela	172	<b>0.9</b>
16 Chile	164	<b>0.9</b>
17 Norway	159	<b>0.9</b>
18 El Salvador	159	<b>0.9</b>
19 Ecuador	108	<b>0.6</b>
20 Guatemala	85	<b>0.5</b>

Imports from ...

Partner regions	Mio euro	%
<b>World</b>	<b>16 175</b>	<b>100.0</b>
<b>NAFTA</b>	1 943	<b>12.0</b>
<b>Latin America</b>	1 497	<b>9.3</b>
<b>EU Candidates</b>	43	<b>0.3</b>
<b>EFTA</b>	296	<b>1.8</b>
<b>Medit.Countries*</b>	8	<b>0.0</b>
<b>ASEAN</b>	1 332	<b>8.2</b>

Exports to ...

Partner regions	Mio euro	%
<b>World</b>	<b>2 002</b>	<b>100.0</b>
<b>NAFTA</b>	311	<b>15.5</b>
<b>Latin America</b>	520	<b>26.0</b>
<b>EU Candidates</b>	25	<b>1.2</b>
<b>EFTA</b>	47	<b>2.4</b>
<b>Medit.Countries*</b>	10	<b>0.5</b>
<b>ASEAN</b>	46	<b>2.3</b>

Imports + Exports

Partner regions	Mio euro	%
<b>World</b>	<b>18 177</b>	<b>100.0</b>
<b>NAFTA</b>	2 255	<b>12.4</b>
<b>Latin America</b>	2 017	<b>11.1</b>
<b>EU Candidates</b>	68	<b>0.4</b>
<b>EFTA</b>	343	<b>1.9</b>
<b>Medit.Countries*</b>	18	<b>0.1</b>
<b>ASEAN</b>	1 378	<b>7.6</b>

NAFTA: Canada, Mexico, USA.

Latin America: 20 countries.

EU Candidates: Bulgaria, Croatia, Romania, Turkey

EFTA: Iceland, Norway, Switzerland.

Mediterranean countries \*excluding Turkey: Algeria, Cisjordanie Gaza, Egypt, Israel, Jordan, Lebanon, Morocco, Syria, Tunisia.

ASEAN: Brunei, Cambodia, Indonesia, Laos, Malaysia, Myanmar, Philippines, Singapore, Thailand, Vietnam.

European Union: 25 members.

**EUROPEAN UNION, TRADE WITH THE WORLD AND PANAMA, BY SITC SECTION**

(2004)

**European Union, Imports from the World**

Products (Sitc Sections) by order of importance	Mio euro	%
<b>TOTAL</b>	<b>1 029 326</b>	<b>100.0</b>
Machinery and transport equipment	351 356	34.1
Mineral fuels, lubricants and rel. Materials	181 071	17.6
Miscell. manuf. Articles	153 595	14.9
Manuf goods classif. chiefly by material	107 708	10.5
Chemicals and related prod., n.e.s.	86 307	8.4
Food and live animals	52 072	5.1
Crude materials inedible, except fuels	42 474	4.1
Commodit. and transactions n.e.c.	29 930	2.9
Beverages and tobacco	5 680	0.6
Animal and vegetable oils, fats and waxes	3 657	0.4

**European Union, Imports from ... Panama**

Products (Sitc Sections) by order of importance	Mio euro	%	Share of total EU imports
<b>TOTAL</b>	<b>486</b>	<b>100.0</b>	<b>0.0</b>
Food and live animals	289	59.4	0.6
Machinery and transport equipment	162	33.3	0.0
Manuf goods classif. chiefly by material	9	1.8	0.0
Commodit. and transactions n.e.c.	6	1.2	0.0
Crude materials inedible, except fuels	5	1.0	0.0
Beverages and tobacco	5	1.0	0.1
Chemicals and related prod., n.e.s.	5	1.0	0.0
Miscell. manuf. Articles	4	0.8	0.0
Animal and vegetable oils, fats and waxes	2	0.5	0.1
Mineral fuels, lubricants and rel. Materials			0.0

**European Union, Exports to the World**

Products (Sitc Sections) by order of importance	Mio euro	%
<b>TOTAL</b>	<b>963 709</b>	<b>100.0</b>
Machinery and transport equipment	436 479	45.3
Chemicals and related prod., n.e.s.	151 921	15.8
Manuf goods classif. chiefly by material	123 405	12.8
Miscell. manuf. Articles	113 817	11.8
Food and live animals	33 560	3.5
Mineral fuels, lubricants and rel. Materials	27 757	2.9
Commodit. and transactions n.e.c.	22 616	2.3
Crude materials inedible, except fuels	16 757	1.7
Beverages and tobacco	14 817	1.5
Animal and vegetable oils, fats and waxes	2 366	0.2

**European Union, Exports to ... Panama**

Products (Sitc Sections) by order of importance	Mio euro	%	Share of total EU exports
<b>TOTAL</b>	<b>1 669</b>	<b>100.0</b>	<b>0.2</b>
Machinery and transport equipment	1 036	62.1	0.2
Chemicals and related prod., n.e.s.	291	17.5	0.2
Miscell. manuf. Articles	145	8.7	0.1
Manuf goods classif. chiefly by material	63	3.8	0.1
Beverages and tobacco	56	3.3	0.4
Food and live animals	27	1.6	0.1
Mineral fuels, lubricants and rel. Materials	20	1.2	0.1
Commodit. and transactions n.e.c.	8	0.5	0.0
Crude materials inedible, except fuels	4	0.2	0.0
Animal and vegetable oils, fats and waxes	1	0.1	0.1

World excluding Intra-EU trade and European Union: 25 members.

## EUROPEAN UNION IMPORTS, BY PRODUCT GROUPING

(Mio euro)

### European Union, Imports from the World

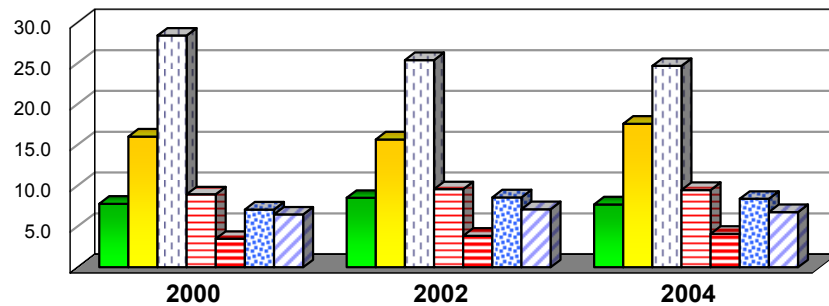
SITC Rev.3 Product Groups	2000	%	2002	%	2004	%
<b>TOTAL</b>	<b>995 649</b>	<b>100.0</b>	<b>941 570</b>	<b>100.0</b>	<b>1 029 326</b>	<b>100.0</b>
<b>Primary Products</b>	<b>287 723</b>	<b>28.9</b>	<b>269 465</b>	<b>28.6</b>	<b>308 008</b>	<b>29.9</b>
of which:						
Agricultural prod.	77 429	7.8	80 196	8.5	79 334	7.7
Energy	159 574	16.0	147 586	15.7	181 071	17.6
<b>Manuf. Products</b>	<b>674 759</b>	<b>67.8</b>	<b>642 001</b>	<b>68.2</b>	<b>675 914</b>	<b>65.7</b>
of which:						
Machinery	282 676	28.4	239 080	25.4	253 943	24.7
Transport equipm	89 012	8.9	90 094	9.6	97 414	9.5
of which:						
Automotive prod.	34 789	3.5	36 321	3.9	42 227	4.1
Chemicals	70 576	7.1	80 626	8.6	86 307	8.4
Textiles and cloth.	64 438	6.5	67 015	7.1	69 705	6.8

### European Union, Imports from ... Panama

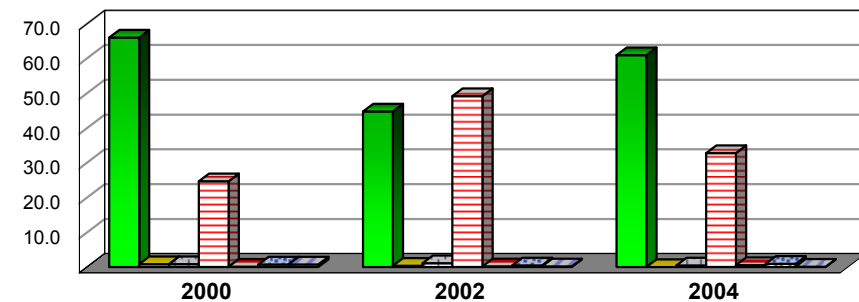
SITC Rev.3 Product Groups	2000	%	2002	%	2004	%	Share of total EU imports
<b>TOTAL</b>	<b>426</b>	<b>100.0</b>	<b>681</b>	<b>100.0</b>	<b>486</b>	<b>100.0</b>	<b>0.05</b>
<b>Primary Products</b>	<b>286</b>	<b>67.2</b>	<b>311</b>	<b>45.6</b>	<b>301</b>	<b>62.0</b>	<b>0.10</b>
of which:							
Agricultural prod.	281	66.0	305	44.7	296	60.9	0.37
Energy	4	0.9	3	0.4	0	0.0	0.00
<b>Manuf. Products</b>	<b>136</b>	<b>31.9</b>	<b>367</b>	<b>53.9</b>	<b>179</b>	<b>36.8</b>	<b>0.03</b>
of which:							
Machinery	4	0.9	8	1.1	3	0.5	0.00
Transport equipm	105	24.7	335	49.2	159	32.8	0.16
of which:							
Automotive prod.	1	0.1	1	0.2	3	0.6	0.01
Chemicals	3	0.7	3	0.5	5	1.0	0.01
Textiles and cloth.	3	0.8	1	0.2	1	0.1	0.00

### Structure of Imports (%)

#### from the World



#### from ... Panama



World excluding Intra-EU trade and European Union: 25 members.

Source : EUROSTAT (Comext, Statistical regime 4)



## EUROPEAN UNION EXPORTS, BY PRODUCT GROUPING

(Mio euro)

### European Union, Exports to the World

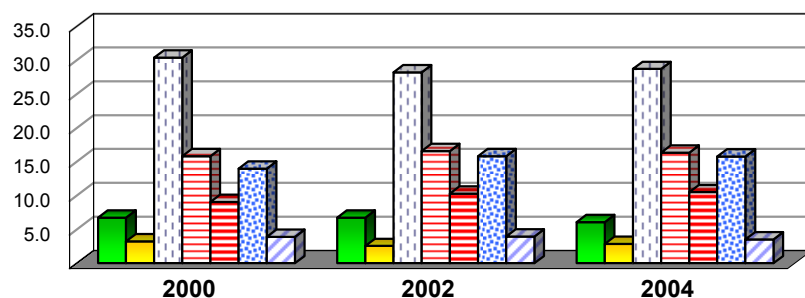
SITC Rev.3 Product Groups	2000	%	2002	%	2004	%
<b>TOTAL</b>	<b>856 728</b>	<b>100.0</b>	<b>900 389</b>	<b>100.0</b>	<b>963 709</b>	<b>100.0</b>
<b>Primary Products</b>	<b>103 681</b>	<b>12.1</b>	<b>101 024</b>	<b>11.2</b>	<b>106 481</b>	<b>11.0</b>
<i>of which:</i>						
Agricultural prod.	57 770	6.7	60 649	6.7	58 655	6.1
Energy	27 769	3.2	22 974	2.6	27 757	2.9
<b>Manuf. Products</b>	<b>734 533</b>	<b>85.7</b>	<b>779 310</b>	<b>86.6</b>	<b>814 397</b>	<b>84.5</b>
<i>of which:</i>						
Machinery	260 474	30.4	253 969	28.2	276 652	28.7
Transport equipm	135 459	15.8	149 355	16.6	157 550	16.3
<i>of which:</i>						
Automotive prod.	77 607	9.1	92 542	10.3	101 238	10.5
Chemicals	119 603	14.0	142 375	15.8	151 921	15.8
Textiles and cloth.	33 356	3.9	35 577	4.0	34 049	3.5

### European Union, Exports to ... Panama

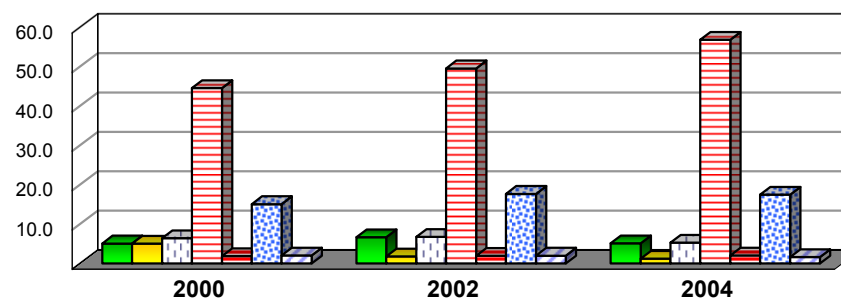
SITC Rev.3 Product Groups	2000	%	2002	%	2004	%	Share of total EU exports
<b>TOTAL</b>	<b>1 633</b>	<b>100.0</b>	<b>1 627</b>	<b>100.0</b>	<b>1 669</b>	<b>100.0</b>	<b>0.17</b>
<b>Primary Products</b>	<b>172</b>	<b>10.5</b>	<b>144</b>	<b>8.8</b>	<b>110</b>	<b>6.6</b>	<b>0.10</b>
<i>of which:</i>							
Agricultural prod.	83	5.1	108	6.7	86	5.2	0.15
Energy	83	5.1	29	1.8	20	1.2	0.07
<b>Manuf. Products</b>	<b>1 452</b>	<b>88.9</b>	<b>1 467</b>	<b>90.2</b>	<b>1 534</b>	<b>91.9</b>	<b>0.19</b>
<i>of which:</i>							
Machinery	105	6.4	110	6.8	89	5.3	0.03
Transport equipm	727	44.5	806	49.5	948	56.8	0.60
<i>of which:</i>							
Automotive prod.	31	1.9	32	2.0	34	2.0	0.03
Chemicals	247	15.1	288	17.7	291	17.5	0.19
Textiles and cloth.	34	2.1	33	2.0	27	1.6	0.08

### Structure of Exports (%)

#### to the World



#### to ... Panama



■ Agricultural prod.    ■ Energy     Machinery  
 Transport equipm    ■ Automotive prod.     Chemicals  
 Textiles and cloth.

■ Agricultural prod.    ■ Energy     Machinery  
 Transport equipm    ■ Automotive prod.     Chemicals  
 Textiles and cloth.

World excluding Intra-EU trade and European Union: 25 members.

Source: EUROSTAT (Comext, Statistical regime 4)

## RANK OF PANAMA IN EUROPEAN UNION TRADE

(2004)

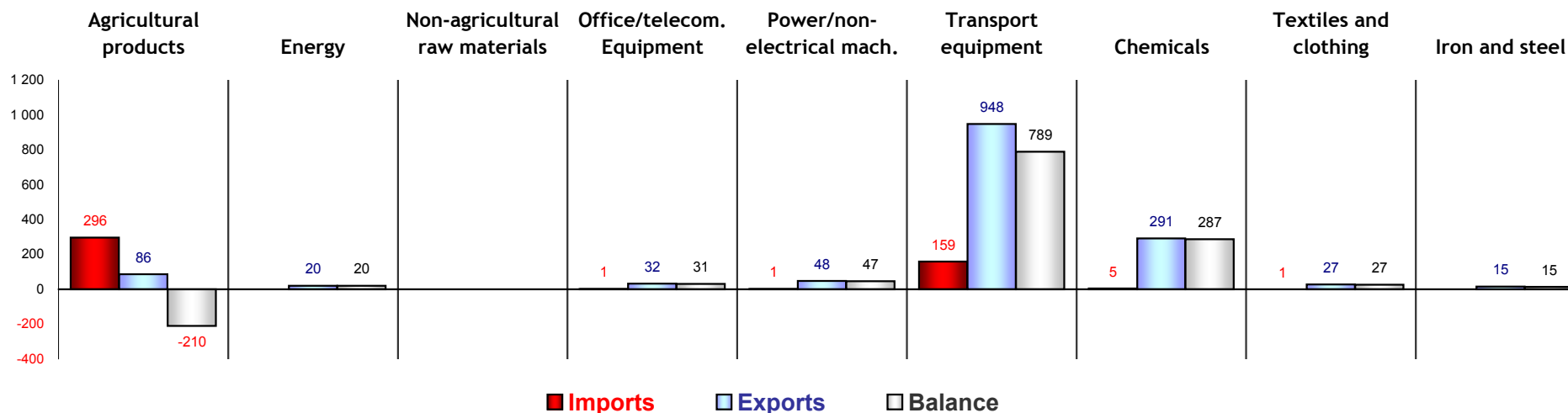
### European Union, Imports from ... Panama

### European Union, Exports to ... Panama

rank	SITC Rev.3 Product Groups	Mio euro	Share of total EU imports	%		rank	SITC Rev.3 Product Groups	Mio euro	Share of total EU exports	%		Balance
<b>86</b>	<b>TOTAL</b>	<b>486</b>	<b>0.05</b>	<b>100.0</b>		<b>54</b>	<b>TOTAL</b>	<b>1 669</b>	<b>0.17</b>	<b>100.0</b>		<b>1 183</b>
<b>46</b>	Agricultural products	296	0.37	60.9		<b>73</b>	Agricultural products	86	0.15	5.2		-210
<b>105</b>	Energy		0.00			<b>55</b>	Energy	20	0.07	1.2		20
<b>69</b>	Non-agricultural raw materials		0.00			<b>137</b>	Non-agricultural raw materials		0.07			
<b>90</b>	Office/telecom. Equipment	1	0.00	0.2		<b>92</b>	Office/telecom. Equipment	32	0.04	1.9		31
<b>102</b>	Power/non-electrical mach.	1	0.00	0.2		<b>97</b>	Power/non-electrical mach.	48	0.03	2.9		47
<b>38</b>	Transport equipment	159	0.16	32.8		<b>31</b>	Transport equipment	948	0.60	56.8		789
<b>74</b>	Chemicals	5	0.01	1.0		<b>50</b>	Chemicals	291	0.19	17.5		287
<b>116</b>	Textiles and clothing	1	0.00	0.1		<b>63</b>	Textiles and clothing	27	0.08	1.6		27
<b>90</b>	Iron and steel		0.00			<b>72</b>	Iron and steel	15	0.09	0.9		15

*Share by products in EU 25 Total Trade excluding Intra-EU trade.*

### EU Trade with ... Panama



## EU TRADE WITH THE WORLD AND EU TRADE WITH PANAMA (2004)

(Ranking by Trade Flows in 2004)

EU Imports from ...				
Harmonized System	World	Panama		
		Mio euro	%	Share of total EU imports
Sections:				
<b>TOTAL</b>	<b>1 029 326</b>	<b>486</b>	<b>100.0</b>	<b>0.05</b>
TDC II	26 015	259	53.3	1.00
TDC XVII	86 707	159	32.7	0.18
TDC I	15 190	27	5.5	0.18
TDC IV	25 223	9	1.9	0.04
TDC VIII	9 406	8	1.6	0.08
TDC V	198 937	5	1.0	0.00
TDC VI	80 408	3	0.7	0.00
TDC XVI	264 050	3	0.6	0.00
TDC III	3 459	2	0.5	0.06
TDC XIV	29 067	1	0.3	0.00
TDC XVIII	41 435	1	0.2	0.00
TDC XXI	2 513	1	0.2	0.03
TDC XV	62 815	1	0.1	0.00
TDC XI	69 142	1	0.1	0.00
TDC XX	25 517	1	0.1	0.00
TDC X	13 028			0.00
TDC XII	12 451			0.00
TDC VII	26 282			0.00
TDC IX	10 965			0.00
TDC XIII	7 303			0.00

EU Exports to ...				
Harmonized System	World	Panama		
		Mio euro	%	Share of total EU exports
Sections:				
<b>TOTAL</b>	<b>963 709</b>	<b>1 669</b>	<b>100.0</b>	<b>0.17</b>
TDC XVII	146 308	933	55.9	0.64
TDC VI	137 277	288	17.3	0.21
TDC XVI	290 315	104	6.2	0.04
TDC IV	30 575	75	4.5	0.25
TDC XIV	24 836	73	4.4	0.29
TDC XV	60 046	33	2.0	0.06
TDC XI	35 925	27	1.6	0.07
TDC V	30 943	22	1.3	0.07
TDC XVIII	48 519	19	1.2	0.04
TDC XX	17 534	17	1.0	0.10
TDC X	23 738	14	0.8	0.06
TDC XIII	14 914	14	0.8	0.09
TDC VII	36 607	13	0.8	0.03
TDC I	12 151	8	0.5	0.06
TDC II	9 930	5	0.3	0.05
TDC XII	5 927	5	0.3	0.08
TDC VIII	8 465	4	0.2	0.04
TDC III	2 438	1	0.1	0.06
TDC IX	7 893	1	0.1	0.02
TDC XXI	4 170			0.01
TDC XIX	1 259			0.02

EU Balance with ...		
Harmonized System	World	Panama
Sections:		
<b>TOTAL</b>	<b>-65 617</b>	<b>1 183</b>
TDC XVII	59 601	775
TDC VI	56 869	285
TDC XVI	26 266	101
TDC XIV	-4 231	71
TDC IV	5 353	66
TDC XV	-2 770	33
TDC XI	-33 216	26
TDC XVIII	7 085	18
TDC V	-167 994	17
TDC XX	-7 983	16
TDC X	10 711	14
TDC XIII	7 611	14
TDC VII	10 325	13
TDC XII	-6 524	4
TDC IX	-3 072	1
TDC XXI	1 658	-
TDC III	-1 021	-1
TDC VIII	-941	-4
TDC I	-3 039	-19
TDC II	-16 085	-254

### Labels of TDC sections:

TDC I	Ch.01-05	Live animals; animal products	TDC XI	Ch.50-63	Textiles and textile articles
TDC II	Ch.06-14	Vegetable products	TDC XII	Ch. 64-67	Footwear, headgear, umbrellas, sun umbrellas, walking-sticks
TDC III	Ch.15	Animal or vegetable fats and oils and their cleavage products	TDC XIII	Ch.68-70	Articles of stone, plaster, cement, asbestos, mica or similar
TDC IV	Ch.16-24	Prepared foodstuffs; beverages, spirits and vinegar; tobacco ...	TDC XIV	Ch.71	Natural or cultured pearls, precious or semi-precious stones...
TDC V	Ch.25-27	Mineral Products	TDC XV	Ch.72-83	Base metals and articles of base metal
TDC VI	Ch.28-38	Products of the chemical or allied industries	TDC XVI	Ch.84-85	Machinery and mechanical appliances; electrical equipment; parts
TDC VII	Ch.39-40	Plastics and articles thereof of animal gut (other than silkworm gut)	TDC XVII	Ch.86-89	Vehicles, aircraft, vessels and associated transport equipment
TDC VIII	Ch.41-43	Raw hides and skins, leathe materials; basketware and wickerwork	TDC XVIII	Ch.90-92	Optical, photo, cinema, measuring, checking, precision instrum...
TDC IX	Ch.44-46	Wood and articles of wood; wood charcoal; cork and articles of	TDC XIX	Ch. 93	Arms and ammunition; parts and accessories thereof
TDC X	Ch.47-49	Pulp of wood or of other fibrous cellulosic material; paper or paperboard	TDC XX	Ch.94-96	Miscellaneous manufactured articles
			TDC XXI	Ch.97	Works of art, collectors' pieces and antiques excl.chapter 99 other products

World excluding Intra-EU trade and European Union: 25 members.